

**AMscreen**

Think outside the screen™

# DS75 Technical Specification

Double/Single Sided

Amscreen® is a leading provider of screen solutions in Europe offering seamless, scalable deployments and support via our full service approach and RDM®.

# DS75

## Full service screen solution

### HARDWARE SUMMARY



#### HIGH IMPACT

Weatherproof, high bright displays bringing content alive whatever the weather



#### EASE OF INSTALL AND MAINTENANCE

Bespoke modular designs and jigs offer fast, non-disruptive installs and maintenance



#### DISTRIBUTION AND SCALABILITY

European production and plug and play design gives speed and flexibility



#### SECURITY AND FUTURE PROOFED

Secure system via encryption and authentication protocols plus ease of leveraging new tech

### SOFTWARE SUMMARY



#### SMART TRACKING AND SENSORS

Smart brightness® and optional audience tracking using leading tracking platforms, such as Quividi



#### HOST INTEGRATION AND REMOTE MANAGEMENT

Integration with host systems such as Ayuda, Scala, Broadsign etc and RDM® provision

### SERVICE SUMMARY



#### RDM® REMOTE SMART MANAGEMENT

Alerts and automated data collection via unique system architecture



#### RDM® REMOTE SMART MAINTENANCE®

Integrated asset management and trouble ticketing to facilitate remote fixes

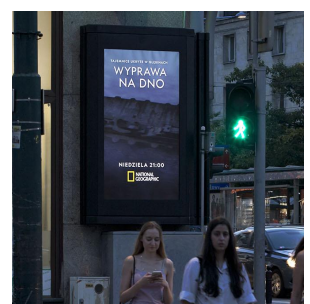
### SUITABLE FOR



Outdoor bus shelter  
(single or dual sided)



Outdoor free standing  
(single or dual sided)



Outdoor wall mount

### SMART CITY SOLUTIONS

01

#### CONNECTING AND EMPOWERING COMMUNITIES

Creating one smart ecosystem for communities.

02

#### SAFE AND SUSTAINABLE ENVIRONMENTS

Using technology to reduce city growing pains.

03

#### TARGETING AND INSPIRING AUDIENCES

Cutting through the digital noise with powerful data.

For more information about our Smart City Solutions visit [amscreen.com/what-we-do/smart-cities](https://amscreen.com/what-we-do/smart-cities)

# DS75

## Technical Specifications

Digital Display Panel	
Technology	LCD
Orientation	Portrait operation
Maximum Resolution	1080 x 1920 pixels (full HD)
Viewability	Direct Sunlight Readable
Format	9:16
Display Colours	16.7 Million
Pixel Arrangement	RGB vertical stripe
White Luminance (Typ)	2500 cd/m2
Contrast Ratio (Typ)	5000:1
Active Area	928 x 1650 mm
DPI	0.86 x 0.86 mm
Viewing Angle (Typ)	Wide viewing angle (+/- 89°)
Front Optical Sensor	Yes - for additional proof of content payout
Brightness	Automatic Brightness control to adapt screen brightness to ambient light level  Smart Brightness <sup>*</sup> to adapt backlight brightness during certain hours to not exceed a maximum value
Backlight	LED - automatically turned off when unit accessed Remote re-enablement for increased security

<sup>\*1</sup> UK Power Distribution Assembly (PDA) - No Internal Breaker

<sup>\*2</sup> EU Power Distribution Assembly (PDA) - 10A Type C Internal Breaker

<sup>\*3</sup> France Power Distribution Assembly (PDA) - 10A Type C Internal Breaker

RDM <sup>®</sup> Smart Maintenance <sup>®</sup> (Option)	
On-site Serviceability	Easy replacement of the LCD panel
	Easily replacement of control modules e.g. fans, power supplies, PC, router, control units
	Easy replacement of glass
RDM <sup>®</sup> Remote Management	Remote data collection associated with PC system, video, brightness, backlight, temperature, humidity, light, fans, router and media player
	Alarm exceptions/configuration System configuration/control Asset management
RDM <sup>®</sup> Managed Maintenance Service Option	Centrally managed maintenance service through Amscreen help desk
	Trouble ticketing system and process for managing, escalating and resolving issues quickly in order to minimise downtime
	Service Level Agreement (SLA) reporting against key operational criteria
RDM <sup>®</sup> Predictive Maintenance	Advanced warnings of possible failure conditions
	Usage profiling over time to detect early failure patterns

Power	
Power Supply	220-240VAC, 50Hz single phase mains
Battery	Battery backup for clean shutdown on power loss
Power Consumption	Dual Digital = 2050W (Max) / 1265W (Typ @50% brightness) Single Digital = 1250W (Max) / 790W (Typ @50% brightness)
Plinth	Standard plinths available with provision for power distribution
Internal Protection	Mains voltage surge protection and EMC filter. Digital - Optional Power Distribution Assemblies (PDA) <sup>*1, *2, *3</sup>
External Protection Requirements	Digital - 10A Type C <sup>*1</sup> 16A Type C <sup>*2, *3</sup> Poster - 6A Type B

Enclosure	
Types	Available with additional fixing kits/cladding for:- <ul style="list-style-type: none"> <li>• Bus Shelter installations</li> <li>• Tall free standing units</li> <li>• Short free standing unit</li> </ul>
Digital Glass	9.5mm heat strengthened laminated construction Optically clear low reflective coated face glass. IR filters included
Aesthetics	Various standard cladding available + customizable according to requirements
Ventilation	Top and bottom for simple integration
Modular Chassis	For fast on-site replacement of internal modules
Audience Analytics Camera Option	Full HD 1080 x 1920 pixels for maximum viewer detection range located centrally above LCD display
Customisable Branding	Provision for a client logo sticker to be fitted to the metal cladding
Material	Stainless steel/Aluminium

Environmental	
IP Rating	IP55 Weatherproof
Operating Temperature	-20 to +40 deg C
Storage Temperature	-20°C to +60°C
Relative Humidity	5% to 95% over the operating temperature range
Smart Coldstart®	Intelligent heater-based control for starting up sensitive electronics in cold conditions
Smart Environmentals®	Intelligent control of environmental conditions within an outdoor display
Smart Exchange®	Intelligent control of airflow to maximise heat exchanger efficiency
Third Party Management	Contact Amscreen for Third Party remote monitoring integration options
Player PC	Independent i5 or AMD based PC capable of integrating customer player/software. (eg Broadsign/Scala)

Networking	
Connectivity	4/5G connectivity with roaming across mobile networks
Antenna	Low profile hockey-puck mounted discreetly at top of the unit
Local Ethernet	Local web server to aid installation and troubleshooting

Other options	
Energy Meter	Energy monitoring integration
Colours	Customisable options to meet specific needs
Touchscreen	Touchscreen options available – contact Amscreen

Touchscreen Full 75" display area on front door (side A)	
Detection method	Projected Capacitive Technology
Input method	Finger and gloved finger
No. of simultaneous touches	40
Interface	HID
OS with Multitouch	Windows 7 embedded on DS75 primary PC - CMS managed
Touch Accuracy	0.53% of sensor diagonal
Touch response	5 mS
Finger separation	2.64% of sensor diagonal

\*1 UK Power Distribution Assembly (PDA) – No Internal Breaker

\*2 EU Power Distribution Assembly (PDA) – 10A Type C Internal Breaker

\*3 France Power Distribution Assembly (PDA) – 10A Type C Internal Breaker

## Installation

- Bus shelter integration (subject to static and dynamic loads)
- Transported fully assembled with transport jigs that:
- Secure Wafer displays in transit
- Maximise transport floor area
- Aid on-site/on-ground Wafer installation and manoeuvrability
- Lifting jigs to aid Wafer installation
- Simple installation process minimising on-site installation time

## Security and Vandalism

- Robust materials
- Front-facing heat strengthened laminated glass
- Secure locking to prevent internal access
- Secure encrypted transmission between Wafer displays and central management systems

## Conformance

- CE (RED, LVD, EMC)
- RoHS and WEEE
- IEE Wiring Regulations 17th Edition
- BS EN 12600 and BS EN 356 (Class P3A)



# DS75 Bus Shelter

## Single or Dual Sided

- ✓ High impact versatile sign integrating with existing structures
- ✓ Single (digital) sided display with rear backlit poster option
- ✓ Dual (digital) sided display variant
- ✓ Bus shelter integration
- ✓ Audience analytic HD camera on digital sides
- ✓ Free Standing
- ✓ On-ground and sub-ground mounting

## Dimensions\*

Height: 2,354mm (full)

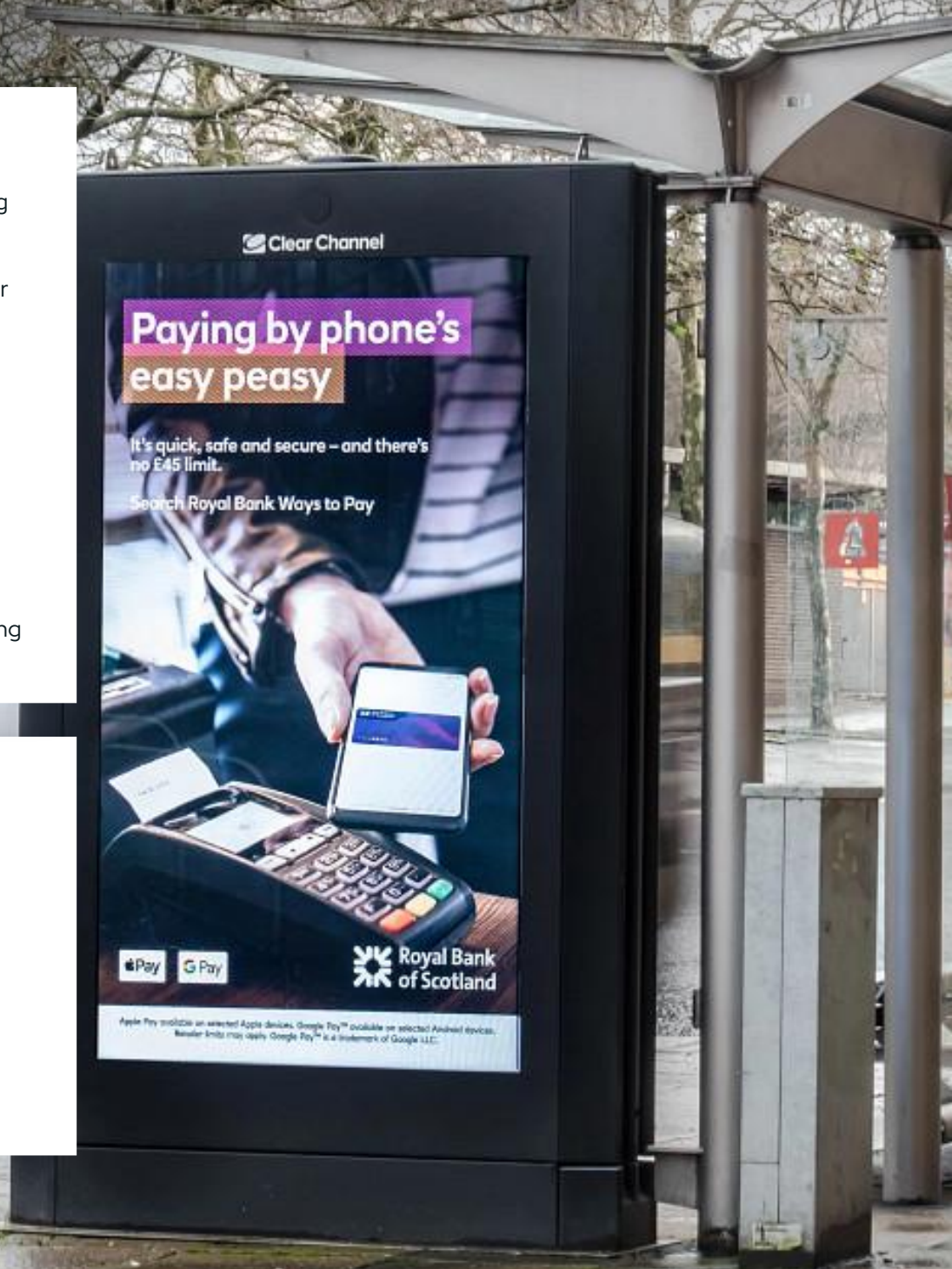
Width: 1,340mm

Depth: 305mm

Note: all dimensions +/-7mm

Weight: 390 Kg

*\*Subject to Requirements*



Amscreen offer many product variants. For more information please [contact us](#).



# DS75 Free Standing Unit

## Single or Dual Sided

- ✓ Super sized sign for maximum high street visibility
- ✓ Single (digital) sided display with rear backlit poster variant
- ✓ Dual (digital) sided display variant
- ✓ Free standing
- ✓ Provision for mains consumer panel

## Dimensions\*

Height: 2862mm (full)

Width: 1,340mm

Depth: 308mm

Note: all dimensions +/-7mm

Weight: 430 Kg

*\*Subject to Requirements*



Amscreen offer many product variants. For more information please [contact us](#).



# DS75 Wall Mount

## Single sided

- ✓ Single (digital) sided display with rear mounting bracket
- ✓ Mounts to existing walls
- ✓ Audience analytic HD camera

## Dimensions\*

Height: 1905mm (full)

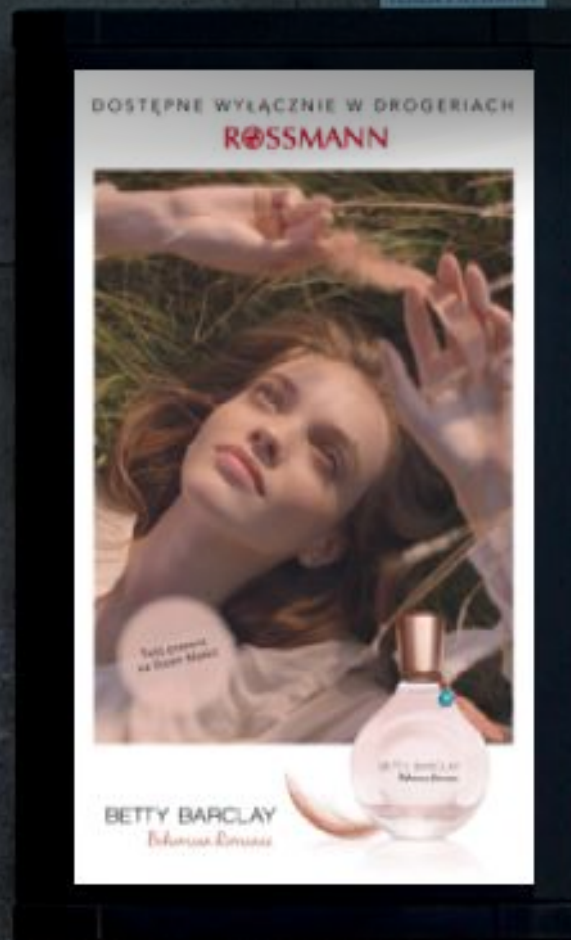
Width: 1,340mm

Depth: 310mm (max)

Note: all dimensions +/-7mm

Weight: 287 Kg + 24 Kg Rear Bracket

*\*Subject to Requirements*



Amscreen offer many product variants. For more information please [contact us](#).



# Do you have a project that would benefit from our technology?

We want to hear from you. Visit [amscreen.com/contact](https://amscreen.com/contact) to get in touch, or email or call us directly.

## CONTACT US

[info@amscreen.com](mailto:info@amscreen.com)

+44 (0) 1204 664 333

## HEAD OFFICE

Amscreen House, Paragon Business Park, Chorley New Road, Horwich, Bolton, BL6 6HG

## WAREHOUSE

Unit 10, Barrs Fold Close, Wingates Industrial Estate, Westhoughton, Bolton, BL5 3XA

## CONNECT

